

# Resulook™

advanced botanical ingredient

Let your eyes speak

**Nourished follicles to improve hair anchorage, density, and growth**

Botanical extract from the *Myrothamnus flabellifolius* resurrection plant intended to revive the appearance of the eyes by improving hair nourishment and anchorage, to promote growth and density of eyelashes and eyebrows.

**COMMERCIAL SOLUTION:** Clear light to dark amber liquid containing 0.3% Myrothamnus Flabellifolia Leaf/Stem Extract.

**INCI:** Glycerin, Water (Aqua), Myrothamnus Flabellifolia Leaf/Stem Extract.

**USE LEVEL:** 2%      **SOLUBILITY:** Water soluble.

**SUSTAINABILITY:**



Naturality according to ISO 16128  
**100% natural origin content**

You know the destination  
**WE'LL HELP YOU REACH IT SUSTAINABLY**

**SOCIAL ACTION:** With Resulook™ advanced botanical ingredient, LLS Beauty is supporting the Look Good Feel Better® program.

**Longer eyelashes and fuller eyebrows**

## SCIENCE

The hair cycle is a stem cell-mediated process that involves the periodic destruction and regeneration of hair follicles. It consists of three defined stages: anagen (growth), catagen (regression) and telogen (rest).

Growth of a new hair fiber requires reentry into the anagen stage, a process involving the activation of multipotent epithelial stem cells residing in the hair bulge. This activation is regulated by the hair follicle dermal papilla cells, which instruct the stem cells in the bulge to differentiate into different cells, including keratinocytes, which produce the keratin necessary to form the new hair fiber. To minimize hair loss and improve hair growth, strong hair anchoring and improved microcirculation are needed.

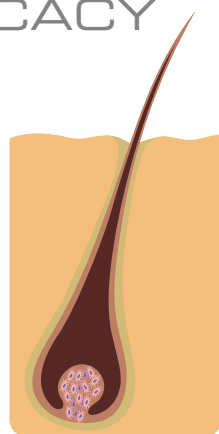
**Resulook™ advanced botanical ingredient** showed, *in vitro*, to induce the proliferation of hair follicle dermal papilla cells and keratinocytes for proper hair growth, while boosting microvasculature and favoring the anchorage of the hair. When applied as a serum and mascara on volunteers, the ingredient helped obtain longer and fuller eyelashes and eyebrows for a more revived and beautiful look.



## IN VITRO EFFICACY

### IMPROVED HAIR FOLLICLE DERMAL PAPILLA CELLS AND KERATINOCYTE PROLIFERATION

by 33% and 16% respectively



### BETTER HAIR ANCHORAGE

- +143% Collagen XVII
- +222% integrin  $\beta$ 4

- +230% Collagen XVII
- +204% integrin  $\beta$ 4

### BOOST IN MICROVASCULATURE

Boost in collagen XVII and integrin  $\beta$ 4, key for stronger hair anchorage

Increased proliferation of essential cells that support hair growth

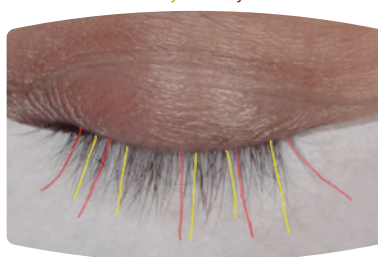
Improved microvasculature for better nourishment of hair follicles

## IN VIVO EFFICACY

### BRINGING YOUR EYES BACK TO LIFE

31 women applied a serum containing 2% Resulook™ advanced botanical ingredient and a placebo serum on eyelashes roots and eyebrows, half face, twice a day. They also applied a mascara containing 2% Resulook™ advanced botanical ingredient and a placebo mascara on eyelashes, half face, once a day.

0 days / 56 days

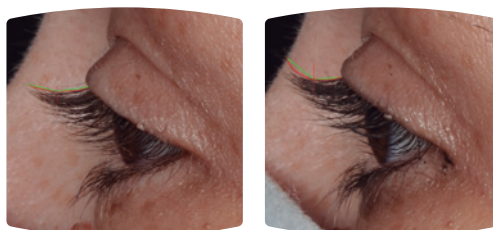


#### • Eyelash length

The pixels corresponding to the longest five lashes were counted.

0 days

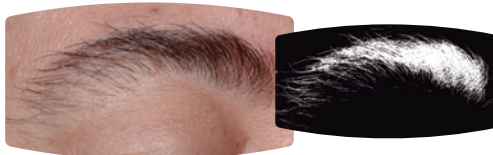
56 days



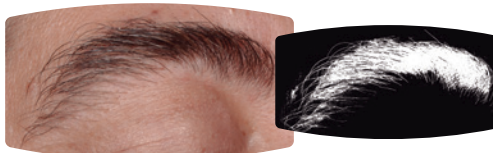
#### • Eyelash lift

The aperture angle was measured at the middle point of the eyelash.

0 days



56 days



#### • Eyebrow density

The pixels corresponding to hair were counted from binary images of the eyebrows.

164% increase in eyelashes length vs. placebo

Lash lift effect for a more revived and beautiful look

Filling effect for bold and attractive eyebrows

Lubrizon Advanced Materials, Inc. ("Lubrizon") hopes that you have found the information provided helpful, but you are cautioned that this material, including any prototype formulas, is for informational purposes only and you are solely responsible for making your own assessment of appropriate use of the information. TO THE MAXIMUM EXTENT PERMITTED BY APPLICABLE LAWS, LUBRIZOL MAKES NO REPRESENTATIONS, GUARANTEES, OR WARRANTIES (WHETHER EXPRESS, IMPLIED, STATUTORY, OR OTHERWISE), INCLUDING ANY IMPLIED WARRANTIES OF MERCHANTABILITY OR FITNESS FOR A PARTICULAR PURPOSE, OR REGARDING THE COMPLETENESS, ACCURACY, OR TIMELINESS OF ANY INFORMATION. Lubrizon does not guarantee how the materials referenced herein will perform in combination with other substances, in any methods, conditions, or processes, with any equipment, or in non-laboratory environments. BEFORE COMMERCIALIZATION OF ANY PRODUCT CONTAINING THESE MATERIALS, YOU SHOULD THOROUGHLY TEST SUCH PRODUCT, INCLUDING HOW THE PRODUCT IS PACKAGED, TO DETERMINE ITS PERFORMANCE, EFFICACY, AND SAFETY. You are solely responsible for the performance, efficacy, and safety of any products you manufacture. Lubrizon shall not be liable, and you shall assume all risk and responsibility for, any use or handling of any material. Any claims may not be approved in all jurisdictions. Any entity making claims related to these products is responsible for complying with local laws and regulations. Nothing contained herein is to be considered as permission, recommendation, or inducement to practice any patented invention without permission of the patent owner, and it is your sole responsibility to determine if any issues related to patent infringement of any component or combination of components relating to the information provided exists. You acknowledge and agree that you are using the information provided herein at your own risk. If you are dissatisfied with the information provided by Lubrizon, your exclusive remedy shall be to not use the information.